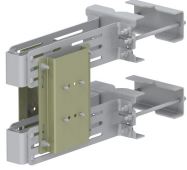


RR-FA2-A



Fast Access RRU Mount Kit for Back-to-Back (B2B) Mounting of (2) RRUs to Round, Straight or Tapered members. With interface plate

The RR-FA2-A is a fast access remote radio mount bracket. It is designed to provide a secure and efficient mounting solution for remote radio head units.

The RR-FA2 mount bracket features a revolutionary key hole located on the clamp that allows the radio and mount bracket assembly to slide perfectly into the clamp keyhole and relieves the operator from equipment weight load.

The new EZ Install design allows the brackets to be mounted to the radio prior to installation on the tower, and painlessly installed onto the tower reducing the chance of damage.

Supports all typical RRH units from Ericsson, Nokia, Samsung, Huawei, Fujitsu

RR-FA2-A includes (2) universal adapter plate "860677769-001" for Ericsson ERS radios such as 8843, 4449, 4890, 4490, 8863

Product Classification

Portfolio	CommScope®
Product Type	Remote radio head unit mount
Ordering Note	CommScope® standard product with terms
Warranty	One year

General Specifications

Mounting	Round and angle legs
Radio Compatibility, Ericsson	(2) RRUS11/12/32, 2212, 4415, 4426, 4478 4415 4426 4435 4449 4455 4460 4467 4478 4480 4490 4890 8863
Radio Compatibility Samsung	RF4402D-D1A RF4437D RF4439D RF4440D RF4442D RFV01U-D1A RFV01U-D2A RT2201-48A RT8808-77A
Tower Taper	Non-tapered Tapered

Dimensions

Height	416.56 mm 16.4 in
---------------	---------------------

RR-FA2-A

Length	457.2 mm 18 in
Mounting Diameter 2, maximum	152.4 mm 6 in
Mounting Diameter 2, minimum	38.1 mm 1.5 in
Mounting Diameter, maximum	142.24 mm 5.6 in
Mounting Diameter, minimum	60.96 mm 2.4 in

Material Specifications

Material Type	Hot dip galvanized steel
----------------------	--------------------------

Packaging and Weights

Included	Clamps Hardware
Packaging quantity	1
Weight, net	16.329 kg 36 lb

* Footnotes

Warranty	For more information, please consult our Product Warranty guidelines
-----------------	--