

## CMC 6" High Plinth, Cabinet Mounting Used with 36" Wide Cabinets

The plinth is designed to mount and elevate the CMC large footprint cabinet by 6". It uses the same ½" hardware from CommScope and is constructed entirely out of steel to support all CMC series large footprint cabinets.

- Designed to withstand seismic Zone 4 requirement
- Same interface to fit the CMC large footprint cabinets

## Product Classification

<b>Regional Availability</b>	Latin America   North America
<b>Portfolio</b>	CommScope®
<b>Product Type</b>	Macro cell site enclosure
<b>Product Series</b>	CMC

## General Specifications

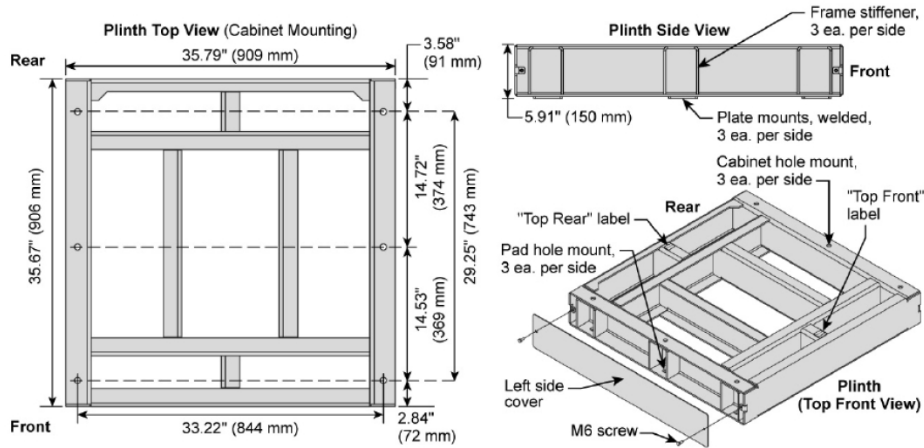
<b>Color</b>	Light Gray (RAL 7035)   Others available at additional cost
--------------	---

## Dimensions

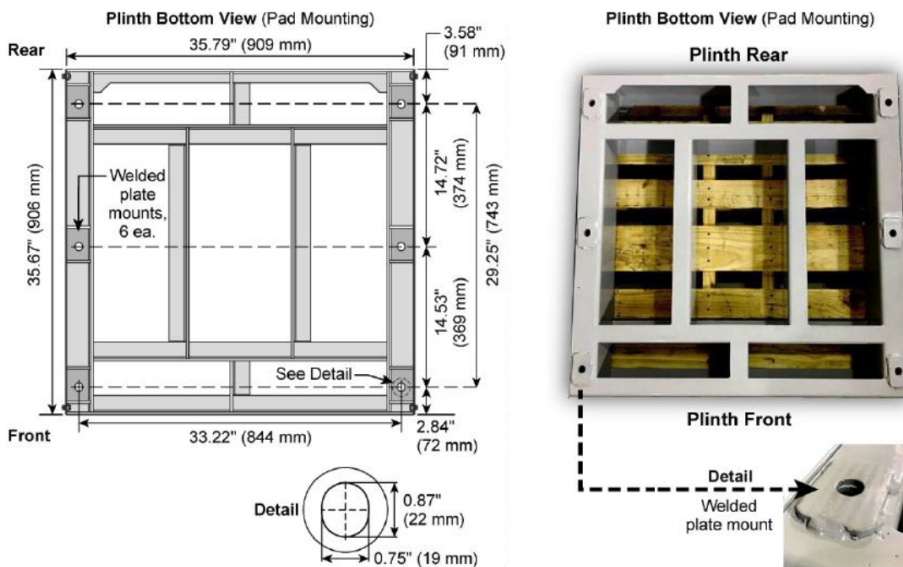
<b>Height</b>	152.4 mm   6 in
<b>Width</b>	914.4 mm   36 in
<b>Depth</b>	939.8 mm   37 in

## Dimension Drawing

# 760250933 | CMC Plinth



## Cabinet Mounting



## Material Specifications

**Finish** Powder coated | UV resistant

**Material Type** Steel

## Environmental Specifications

**Qualification Standards** GR-487 | Seismic rating, zone 4