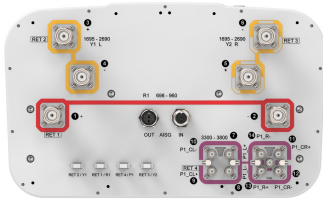


RVVS4-65M-R4



14-port sector antenna, 2x 698-960(R1), 4x 1695-2690(Y1&Y2) MHz, 65° HPBW and 8x 3300-3800(P1) MHz, 90° HPBW, 4x RET.

- All Internal RET actuators are connected in “Cascaded SRET” configuration
- M-LOC cluster connector for 3.3-3.8GHz, equipped with calibration port
- Combination of FDD MIMO antenna and 3.5GHz 8T8R TDD beam forming antenna, all in one for 5G ready

General Specifications

Antenna Type	Sector
Band	Multiband
Calibration Connector Interface	M-LOC
Calibration Connector Quantity	1
Color	Light Gray (RAL 7035)
Grounding Type	RF connector inner conductor and body grounded to reflector and mounting bracket
Performance Note	Outdoor usage
Radome Material	Fiberglass, UV resistant
Radiator Material	Low loss circuit board
Reflector Material	Aluminum
RF Connector Interface	4.3-10 Female M-LOC
RF Connector Location	Bottom
RF Connector Quantity, high band	8
RF Connector Quantity, mid band	4
RF Connector Quantity, low band	2
RF Connector Quantity, total	14

Remote Electrical Tilt (RET) Information

RET Hardware	CommRET v2
RET Interface	8-pin DIN Female 8-pin DIN Male
RET Interface, quantity	1 female 1 male
Input Voltage	10–30 Vdc
Internal RET	High band (1) Low band (1) Mid band (2)

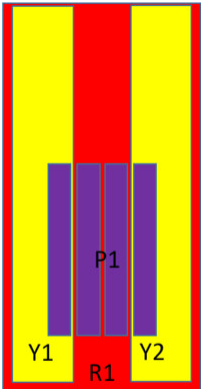
RVVS4-65M-R4

Power Consumption, active state, maximum	10 W
Power Consumption, idle state, maximum	2 W
Protocol	3GPP/AISG 2.0

Dimensions

Width	350 mm 13.78 in
Depth	208 mm 8.189 in
Length	999 mm 39.331 in
Net Weight, without mounting kit	17.4 kg 38.36 lb
TDD Column Spacing	41 mm 1.614 in

Array Layout



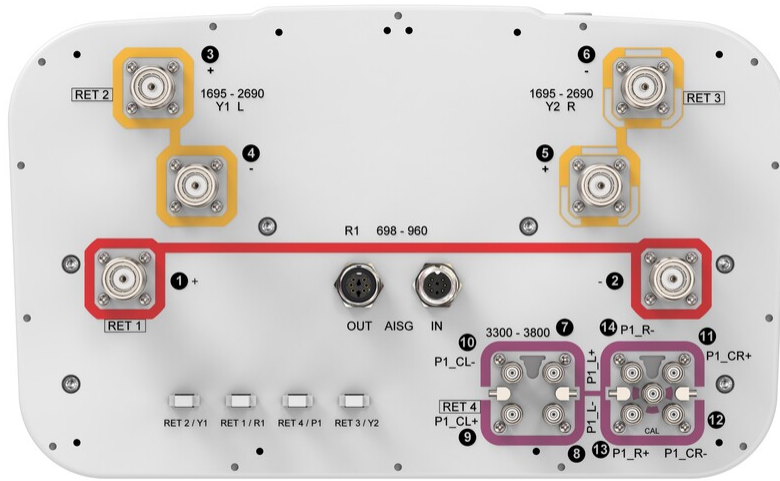
Array	Freq (MHz)	Conns	RET (SRET)	AISG RET UID
R1	698-960	1-2	1	CPxxxxxxxxxxxxxxxxR1
Y1	1695-2690	3-4	2	CPxxxxxxxxxxxxxxxxY1
Y2	1695-2690	5-6	3	CPxxxxxxxxxxxxxxxxY2
P1	3300-3800	7-14	4	CPxxxxxxxxxxxxxxxxP1

Left Right
Bottom

(Sizes of colored boxes are not true depictions of array sizes)

Port Configuration

RVVS4-65M-R4



Electrical Specifications

Impedance	50 ohm
Operating Frequency Band	1695 – 2690 MHz 3300 – 3800 MHz 698 – 960 MHz
Polarization	±45°
Total Input Power, maximum	800 W @ 50 °C

Electrical Specifications

Frequency Band, MHz	698–862	880–960	1695–1920	1920–2200	2300–2690	3300–3600	3600–3800
Gain, dBi	13	13.4	15.6	15.8	15.9	15.5	15.8
Beamwidth, Horizontal, degrees	70	65	66	68	66	85	84
Beamwidth, Vertical, degrees	21.2	18.7	9.3	8.2	6.9	6.6	6.2
Beam Tilt, degrees	4–18	4–18	2–12	2–12	2–12	0–10	0–10
USLS (First Lobe), dB	15	17	15	15	16	16	15
Front-to-Back Ratio at 180°, dB	31	32	31	29	28	29	29
Coupling level, Amp, Antenna port to Cal port, dB						26	26
Coupling level, max Amp Δ, Antenna port to Cal port, dB						±2	±2
Coupler, max Amp Δ, Antenna port to Cal port, dB						0.9	0.9

RVVS4-65M-R4

Coupler, max Phase Δ, Antenna port to Cal port, degrees						7	7
Isolation, Cross Polarization, dB	25	25	25	25	25	25	25
Isolation, Inter-band, dB	25	25	25	25	25	25	25
Isolation, Co-polarization, dB						20	20
VSWR Return loss, dB	1.5 14.0	1.5 14.0	1.5 14.0	1.5 14.0	1.5 14.0	1.5 14.0	1.5 14.0
PIM, 3rd Order, 2 x 20 W, dBc	-150	-150	-150	-150	-150	-140	-140
Input Power per Port at 50°C, maximum, watts	200	200	200	200	150	75	75

Electrical Specifications, BASTA

Frequency Band, MHz	698–862	880–960	1695–1920	1920–2200	2300–2690	3300–3600	3600–3800
Gain by all Beam Tilts, average, dBi	12.7	13	15	15.4	15.4	14.5	15.1
Gain by all Beam Tilts Tolerance, dB	±0.4	±0.5	±0.9	±0.6	±0.9	±0.9	±1.1
Beamwidth, Horizontal Tolerance, degrees	±2.1	±2.5	±8.4	±6.7	±9.5	±25.4	±22.8
Beamwidth, Vertical Tolerance, degrees	±2.2	±0.7	±0.7	±0.6	±0.7	±0.5	±0.4
USLS, beampeak to 20° above beampeak, dB			14	14	13	14	13
Front-to-Back Total Power at 180° ± 30°, dB	21	23	24	24	23	22	23
CPR at Boresight, dB	20	20	21	22	18	16	17
CPR at Sector, dB	10	9	12	8	5	8	7

Electrical Specifications, Broadcast 65°

Frequency Band, MHz	3300–3600	3600–3800
Gain, dBi	16.6	17.1
Beamwidth, Horizontal, degrees	65	63
Beamwidth, Vertical, degrees	6.6	6.2
Front-to-Back Total Power at 180° ± 30°, dB	25	26
USLS (First Lobe), dB	20	20

Electrical Specifications, Envelope Pattern

RVVS4-65M-R4

Frequency Band, MHz	3300-3600	3600-3800
Gain, dBi	19.6	20

Electrical Specifications, Service Beam

Frequency Band, MHz	3300-3600	3600-3800
Steered 0° Gain, dBi	19.6	20
Steered 0° Beamwidth, Horizontal, degrees	27	24
Steered 0° Front-to-Back Total Power at 180° ± 30°, dB	29	29
Steered 0° Horizontal Sidelobe, dB	13	13
Steered 30° Gain, dBi	18.7	19.3
Steered 30° Beamwidth, Horizontal, degrees	31	27
Steered 30° Front-to-Back Total Power at 180° ± 30°, dB	26	29
Steered 30° Horizontal Sidelobe, dB	8	8

Electrical Specifications, Soft Split

Frequency Band, MHz	3300-3600	3600-3800
Gain, dBi	18.6	19.1
Beamwidth, Horizontal, degrees	34	30
Front-to-Back Total Power at 180° ± 30°, dB	27	28

Mechanical Specifications

Wind Loading @ Velocity, frontal	152.0 N @ 150 km/h (34.2 lbf @ 150 km/h)
Wind Loading @ Velocity, lateral	124.0 N @ 150 km/h (27.9 lbf @ 150 km/h)
Wind Loading @ Velocity, maximum	322.0 N @ 150 km/h (72.4 lbf @ 150 km/h)
Wind Loading @ Velocity, rear	161.0 N @ 150 km/h (36.2 lbf @ 150 km/h)
Wind Speed, maximum	241 km/h (150 mph)

Packaging and Weights

Width, packed	451 mm 17.756 in
Depth, packed	368 mm 14.488 in

RVVS4-65M-R4

Length, packed 1142 mm | 44.961 in

Weight, gross 27.9 kg | 61.509 lb

Regulatory Compliance/Certifications

Agency	Classification
CHINA-ROHS	Above maximum concentration value
ROHS	Compliant/Exempted
UK-ROHS	Compliant/Exempted



Included Products

- BSAMNT-3 – Wide Profile Antenna Downtilt Mounting Kit for 2.4 - 4.5 in (60 - 115 mm) OD round members. Kit contains one scissor top bracket set and one bottom bracket set.

* Footnotes

Performance Note Severe environmental conditions may degrade optimum performance

BSAMNT-3



Wide Profile Antenna Downtilt Mounting Kit for 2.4 - 4.5 in (60 - 115 mm) OD round members. Kit contains one scissor top bracket set and one bottom bracket set.

Product Classification

Product Type Downtilt mounting kit

General Specifications

Application Outdoor

Color Silver

Dimensions

Compatible Diameter, maximum 115 mm | 4.528 in

Compatible Diameter, minimum 60 mm | 2.362 in

Weight, net 6.2 kg | 13.669 lb

Material Specifications

Material Type Galvanized steel

Packaging and Weights

Included Brackets | Hardware

Packaging quantity 1

Weight, gross 6.4 kg | 14.11 lb

Regulatory Compliance/Certifications

Agency	Classification
CE	Compliant with the relevant CE product directives
CHINA-ROHS	Below maximum concentration value
ISO 9001:2015	Designed, manufactured and/or distributed under this quality management system
REACH-SVHC	Compliant as per SVHC revision on www.commscope.com/ProductCompliance
ROHS	Compliant
UK-ROHS	Compliant

BSAMNT-3

