

AEKT-430-N1



Antenna Enclosure Kit

- Innovative flexible modular solution enabling suitable sites to be upgraded to 5G capability
- Compatible with a variety of Nokia n78 mMIMO Active Antennas (MAA)
- The module installs directly above an existing, suitable passive antenna to provide the appearance of a single integrated antenna unit – potentially simplifying site zoning approvals
- Installed antenna units can be swapped out on site - e.g. to perform capacity upgrades
- Compatible specifically with antennas featuring CommScope's 430 x 197 mm (WxD) radome housing
- Can be deployed as a standalone solution
- Includes Antenna Enclosure Housing, Installation Kit for compatible Nokia mMIMO Active Antennas (MAA), AEKT-430-N1 Mounting Hardware, protective "Windshield" Panels and Top Cap
- A Mounting Kit for the antenna installed below the AEKT-430-N1 unit should be ordered separately, Commscope P/N: BSAMNT-AEKT (required when installing the AEKT-430-N1 module directly on top of an antenna)
- Contact your Commscope representative for further details. For a list of supported Nokia MAA products, please contact Nokia

General Specifications

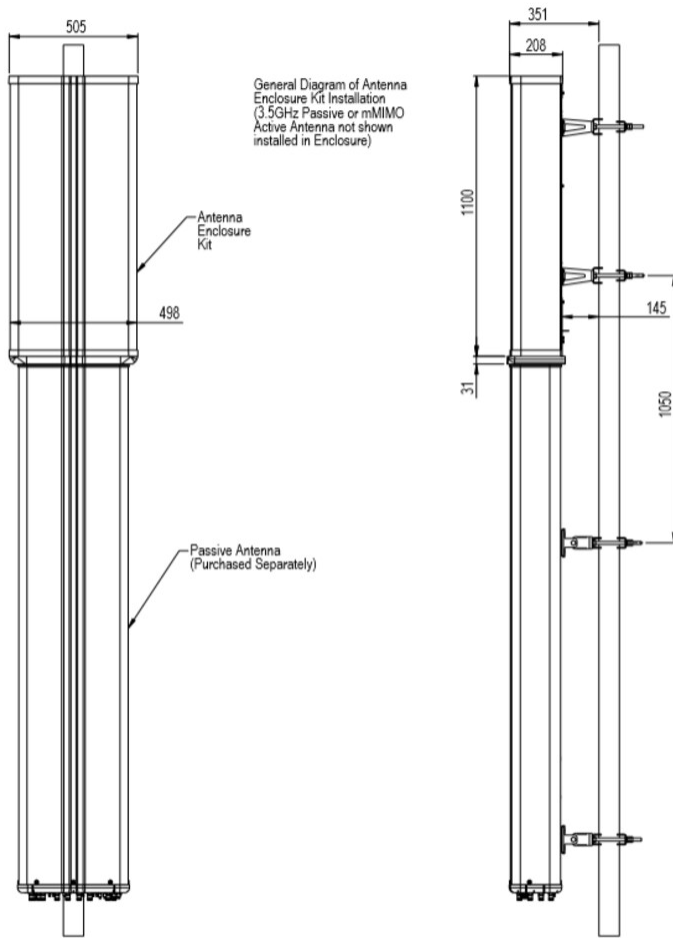
Antenna Type	Antenna enclosure kit
Color	Light Gray (RAL 7035)
Performance Note	Outdoor usage
Radome Material	Fiberglass, UV resistant

Dimensions

Width	498 mm 19.606 in
Depth	199 mm 7.835 in
Length	1100 mm 43.307 in
Net Weight, without mounting kit	9.29 kg 20.481 lb

Application Drawing

AEKT-430-N1



Mechanical Specifications

Wind Loading @ Velocity, frontal	700.0 N @ 150 km/h (157.4 lbf @ 150 km/h)
Wind Loading @ Velocity, lateral	308.0 N @ 150 km/h (69.2 lbf @ 150 km/h)
Wind Loading @ Velocity, maximum	1,385.0 N @ 150 km/h (311.4 lbf @ 150 km/h)
Wind Loading @ Velocity, rear	700.0 N @ 150 km/h (157.4 lbf @ 150 km/h)
Wind Speed, maximum	241 km/h (150 mph)

Packaging and Weights

Width, packed	620 mm 24.409 in
Depth, packed	350 mm 13.78 in
Length, packed	1430 mm 56.299 in

AEKT-430-N1

Weight, gross 26.49 kg | 58.4 lb

Weight, net 20.2 kg | 44.533 lb

Regulatory Compliance/Certifications

Agency

CE
ISO 9001:2015



Classification

Compliant with the relevant CE product directives
Designed, manufactured and/or distributed under this quality management system

* Footnotes

Performance Note

Severe environmental conditions may degrade optimum performance